

## PYBC summary of haulout rules and cradle diagrams 2022

### Persons using the Haul Out yard should be aware of hazards such as:

- Slippery ramps and slippery launching areas.
- Heavy items to be lifted.
- Inhaling vapours and dust.
- Vessel stability in the cradle.
- The dangers of falls from scaffolding and ladders.

1. Members using this facility will take all practicable steps not to injure themselves or any other person whilst in the Haulout area. The Haulout yard is defined as all the sealed area and slipway beside the Yacht Club.
2. The boat's owner will provide a cradle capable of safely holding the boat with four blocks with a minimum height of. The cradle must be well braced. Packers may only be used for levelling or adjusting the cockpit drainage angle. The boat owner is responsible for ensuring the cradle is set up correctly and will securely hold the boat throughout the complete hauling operation and hardstand occupancy period. The committee reserves the right to refuse to haul a boat.
3. Boat owners who have not previously hauled are required to be present at a Haulout operation prior to hauling for the first time. These owners are also required to arrange for a club member experienced with the haul out operation to be on board the vessel for the first hauling.
4. Skipper and crew are not permitted to be on their vessel when it is being moved in the Yard. After the haulout they must leave the vessel as directed by the yard manager. When launching they may only board immediately before the Launch.
5. Boats must be washed down within 24 hours of hauling out. Shellfish and weed must be scraped off and removed to the rubbish bin. Slime and antifouling must be flushed into the filter tank. Water blasters may only be used in the designated area of the yard.
6. All halyards must be taut fore and aft and tied well away from the mast. Sail covers must be secured to prevent flapping. Furling head sails may be retained on the boat but must have the sheets removed and be securely lashed. Noise is a major nuisance to residents and flapping halyards are an ongoing problem.
7. The owner is responsible for the safety of the boat and persons working on the boat at all times on the haulout yard. Ladders must be tied to the boat when in use to prevent the chance of falling, and be taken away or secured (padlocked) to the cradle when not in use.
8. Sand blasting is by approval of the yard manager.
9. Wet sanding – all material removed by wet sanding must be flushed into the sediment tank.
10. Dry scraping – All dust scrapings must be retained within the perimeter of the boat. When work ceases the area must be cleaned and then disposed of into the rubbish bins.
11. Sanders must be used with an effective dust bag or vacuum cleaner. The use of effective drop sheets is highly recommended.
12. Chemical paint stripping may be carried out providing all waste is contained and disposed of. (i.e. NOT flushed into drains, the sea or sediment filter).
13. Spray painting – By arrangement with yard manager.
14. HIAB's or cranes being used on boats but must have approval of the yard manager.
15. All rubbish must be tidied up from around the boat and removed off the yard each day. This includes all rubbish in your designated area, irrespective of its origin. Failure to do so may prejudice the owner's right to haul in the future.
16. All noise must cease by 6.30pm to comply with the Auckland Council's requirements.

17. All rubbish must be removed from the haulout yard and area swept prior to launching.
18. Please confirm your launch date one week before launching with the yard manager.
19. Vehicle access to the yard must be kept clear at all times, the no parking signs must be observed, particularly during haul out operation. The speed limit on the yard is 5km per hour.
20. The storage of boats without continuous work is discouraged and may result in a request to remove the boat from the yard.
21. Boat owners who do not comply with the haulout rules may have their fees doubled at the discretion of the committee.
22. Only designated drivers are authorised to drive the yards vehicals.
23. The PYBC is not responsible for the loss of boat owner's property including tools. People entering and using the yard must do so at their own risk. The club shall not be held responsible for injury to persons using the haul out area.
24. Charges – (All charges must be paid prior to launching).

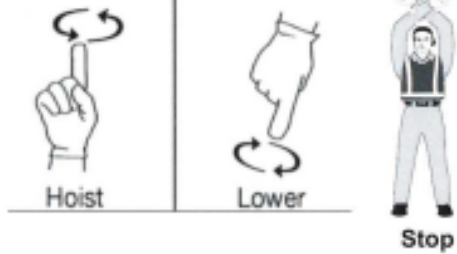
### **Haulout diagrams**

The diagrams below show basic guidelines for putting boats into the quick haul and yard cradles along with winch operator signals.

# PANMURE YACHT AND BOATING CLUB SAILBOAT HAULING



## ON SIDE HAUL



Owner to supply at least 3 crew  
adequate ropes

Lean 3 to 5 degrees

## ON CRADLE



Tighten once  
boat is out of  
the water



Center on cradle

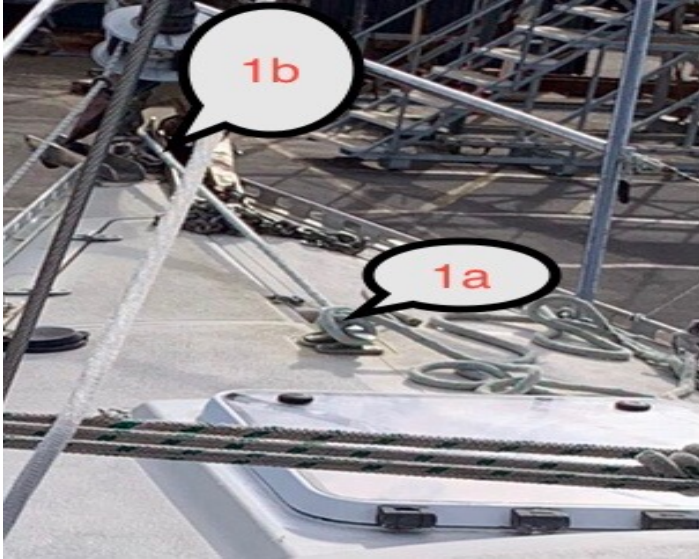


Attach rope to front cleat  
to prevent boat tipping back

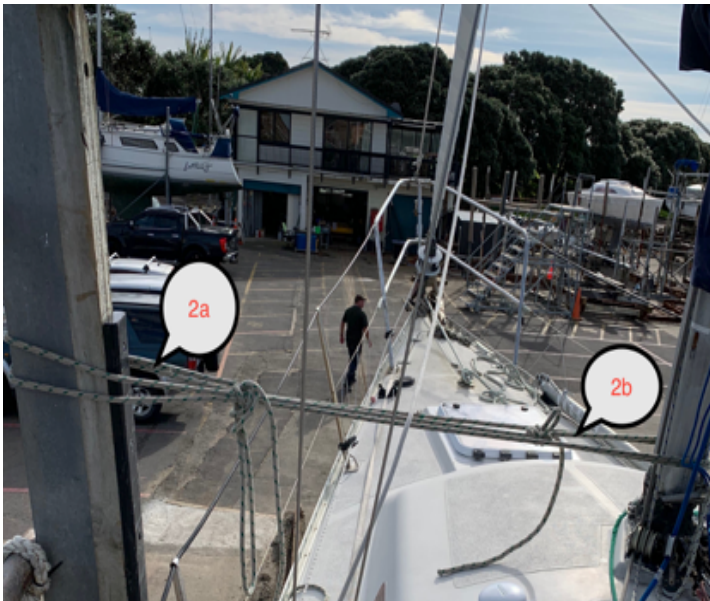
## Photos of rope attachment points

Attaching ropes to the yacht when using the quickhaul trolley. Marine grade ropes to be used.

1. Cradle bow rope put through bow roller (1a) and cleated (1b) off.



2. Rope attached to (2a) back upright of cradle and (2b) mast. Looped around a couple of times.



3. Rope attached to cradle upright (3a) and the starboard winch (3b) to hold boat against cradle.



4. Rope tied to base of port winch, back to rear boat cleat, then to upright and back to top of winch. To stop yacht dropping backwards, when on the trolley.



