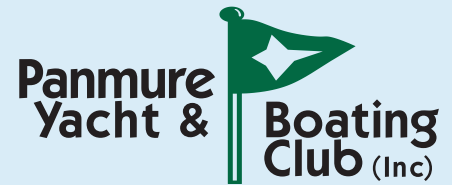


**JOIN US FOR A WEEKEND  
OF FANTASTIC SAILING &  
COMPETITIVE FUN AT THE**



# **2-HANDED 3-LEGGED RACE 2025**

*Kawau Island*



**14 - 16  
MARCH**

Take advantage of this chance to race and mingle with sailors from other yacht clubs with the shared passion for the open water. Whether you're chasing the win, or just want to enjoy the ride, it's the weekend you don't want to miss!

#### **PRIZES**

We're handing out overall prizes for general handicap divisions, plus a special 1st place award for any class with 5 or more entries. And who knows – the race committee might surprise you with a bonus award at the **Prize-giving at 6:30pm on Monday, 17 March 2025.**

#### **PERFECTLY BALANCED RACES**

The race legs are designed to keep things exciting yet manageable for a crew of two – just the right length to stay sharp for sailing and socialising. You'll even be fresh enough to tackle work on Monday (if you must).

#### **SATURDAY NIGHT CELEBRATION**

To celebrate the day on the water, a meal will be provided after the second leg to Kawau.

For more information and course details visit [pybc.org.nz](http://pybc.org.nz)



Proudly sponsored by



Quality roofing, waterproofing & property maintenance services.

[taurusroofing.co.nz](http://taurusroofing.co.nz)

# 2-HANDED 3-LEGGED RACE

## 14 - 16 MARCH, 2025

### ENTRY FORM

Proudly sponsored by



Yacht name: \_\_\_\_\_

Sail No. \_\_\_\_\_ LOA: \_\_\_\_\_ Draft: \_\_\_\_\_ LWL: \_\_\_\_\_

Class/design: \_\_\_\_\_ Displacement:  light  medium  heavy

Last known general: HCP: \_\_\_\_\_ TCF: \_\_\_\_\_ PHRF: \_\_\_\_\_

Dinghy will be towed/carried  I have a life raft

Monohulls:  Division 1 GHS 10m and over  Division 2 GSH under 10m

Multihulls:  Division 3



(1 GHS 10m and over An overall class prize will be awarded if minimum of 5 boats per class design).

Name of owner / skipper: \_\_\_\_\_

I am a current financial member of the YNZ affiliated club: \_\_\_\_\_

Address: \_\_\_\_\_

Phone: \_\_\_\_\_ Email: \_\_\_\_\_

#### Declaration:

I hereby agree to sail under the YNZ rules And the sailing instructions of the Panmure Yacht and Boating Club Inc. And that my yacht conforms to cat 4 + safety rails, lifelines to Category 3 YNZ safety regulations.

Owner / skipper signature: \_\_\_\_\_ Date: \_\_\_\_/\_\_\_\_/\_\_\_\_

Entry fee: **\$95.00** Bank account: **12-3036-0462120-00** Reference: **2H3L & boat name**

**Entries close at 5pm Tuesday 10 March, 2025.**

This event is open to all new comers.

The organising authority is the Panmure Yacht & Boating Club Inc.

For more information and course details visit [pybc.org.nz](http://pybc.org.nz)

Post to: **PO Box 14-067, Panmure, Auckland 1741**

or scan and email to: [info@pybc.org.nz](mailto:info@pybc.org.nz)

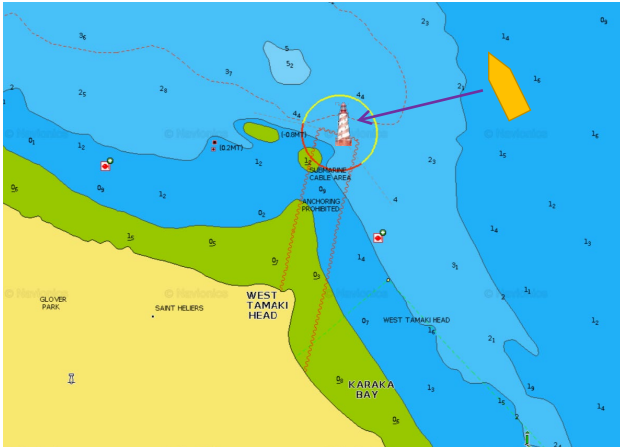




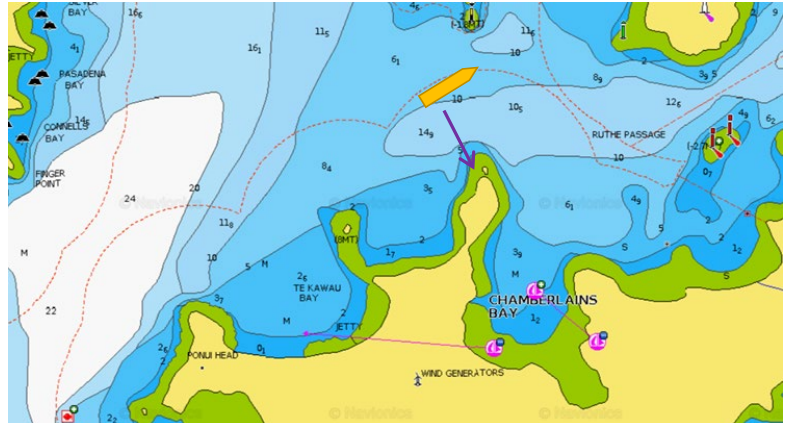
**START / FINISH LINES  
APPROXIMATE POSITIONS**

**Friday evening start:**

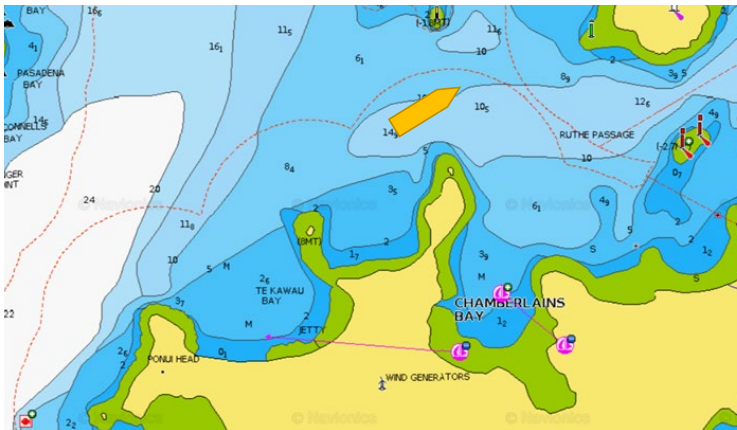
Between Mark Boat and Karaka Light



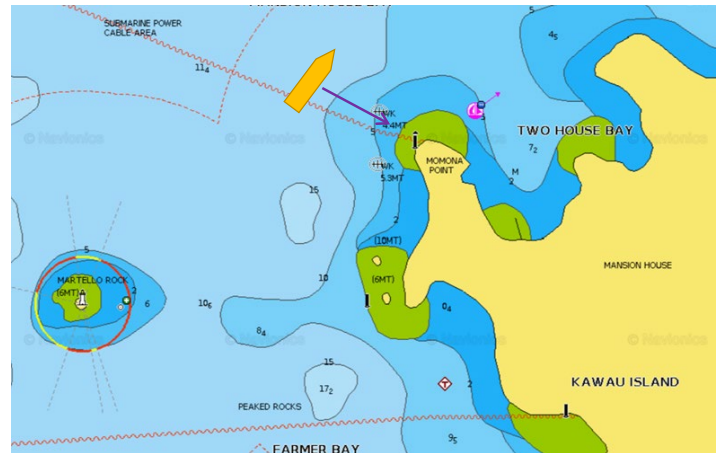
**Friday night finish:** Between Mark Boat and Chamberlains Ponui Island



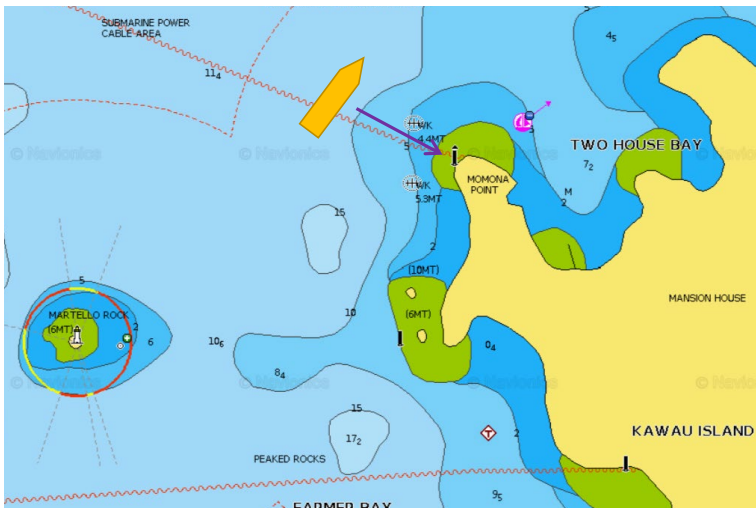
**Saturday start:** Between Mark Boat and Chamberlains Bay Point, Ponui Island



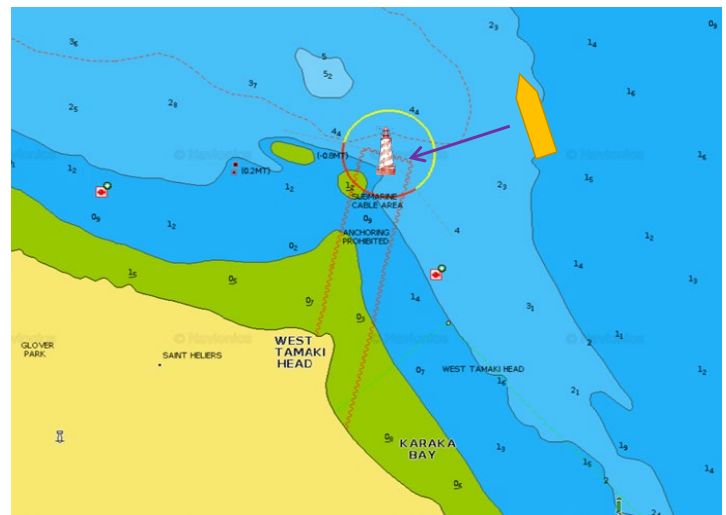
**Saturday finish:** Between Mark Boat and Momona Point



**Sunday start:** Between Mark Boat and Momona Point



**Sunday finish:** Between Mark Boat and Karaka Light



## PRE-RACE BRIEFING

Thursday 13 March at 7.30pm



---

Join us for pre-race briefing, a crucial opportunity to review important details about the race, address any questions, and ensure everyone is fully prepared for the weekend ahead. All contestants welcome.

??? Friday START boat

??? Friday FINISH boat                  Saturday START boat

??? Saturday FINISH boat                  Sunday START boat

??? Sunday FINISH boat

---

## RULES

Please finish as close as possible to the finish boat and identify yourself if possible.

**FIRST EDITION** (Friday night) will be displaying a blue strobe light to identify her in the darkness. All vessels will be listening on channel 62. Please ensure you finish on the correct side of the finish boat.

**Time limit** for Saturday and Sunday, no times will be taken after 1800 hours, legs 2 and 3.

**ATTENTION** is drawn to the following sailing instructions from the PYBC handbook:

**Self-Steering/Autopilot:** Self-steering gear is not permitted in the Two Handed Three Legged. This includes wind gear and electronic autohelm pilots.

**Division Flags :** Both division 1 (blue) and division 2 (yellow) are open with extras. Both Divisions start at the same time.

**Handicaps** will be recalculated after each leg and applied to the next leg.

Results by Top Yacht

---

Clubrooms are open from 4pm – 8pm on Sunday after the race.

Prize giving Monday 11th March. We will be presenting prizes at 6:30pm.

Cash bar and galley menu available.

Any questions contact Racing Secretary (name?) Ph: 0274449777